



The Duke Global Health Institute works to **reduce health disparities** worldwide through research, education and service. Formed in 2006 as part of Duke University's commitment to **spark innovation** in global health research and education, the institute brings together knowledge and resources from across the university to address the most important global health issues of our time.

GLOBAL HEALTH AT DUKE IS



INTERDISCIPLINARY

We bring expertise from a broad range of disciplines to address the many factors that influence global health.



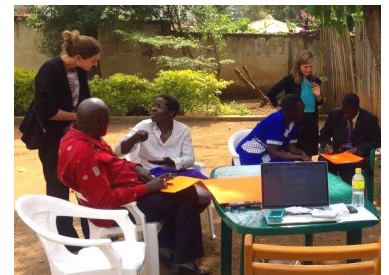
INNOVATIVE

Our teams produce creative solutions that are working to bring better health to people around the world.



EXPERIENTIAL

Our students learn by doing, applying knowledge gained in the classroom in field projects around the world.

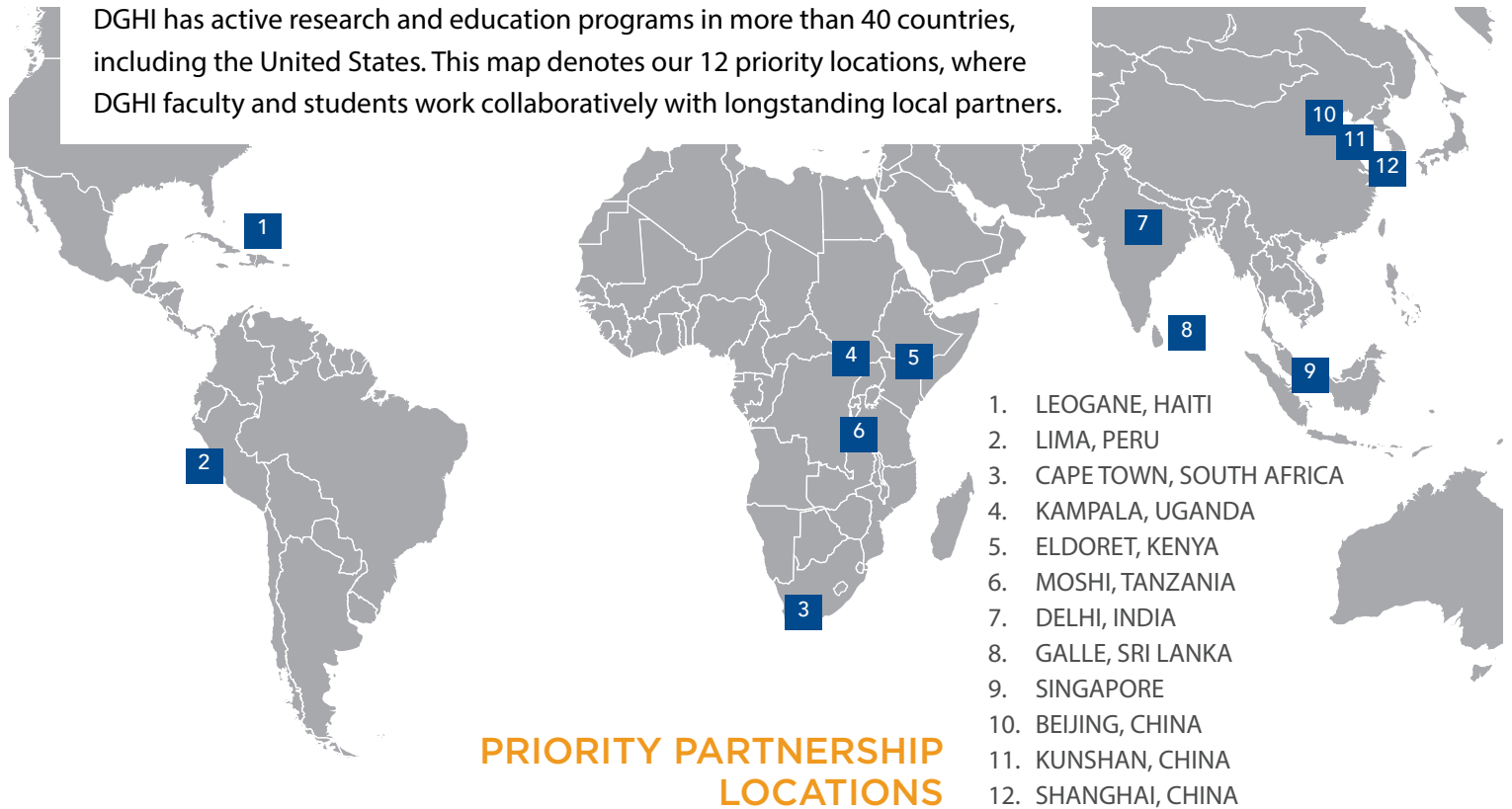


COLLABORATIVE

We engage international and local partners to find solutions that fit the culture and context of the places we work.

WHERE WE WORK

DGHI has active research and education programs in more than 40 countries, including the United States. This map denotes our 12 priority locations, where DGHI faculty and students work collaboratively with longstanding local partners.



EDUCATION

DGHI offers a comprehensive portfolio of global health education programs, including an undergraduate major and minor in global health, a Master of Science in Global Health, and doctoral scholars and certificate programs. At all levels, students gain practical, hands-on experience, working in interdisciplinary teams and alongside local partners to address global health challenges.

Enrollment data as of May 2018

158

undergraduate majors

189

undergraduate minors

83

Master of Science Global Health students

16

doctoral certificate students

13

doctoral scholars

RESEARCH

Around the world, DGHI faculty, staff and students are engaged in research projects that reflect the changing global burden of disease and the many factors that influence human health. A defining characteristic of all DGHI research is its interdisciplinary approach, drawing on the most innovative ideas from medicine, genetics, epidemiology, engineering, environmental and social sciences, public policy, the humanities and beyond to design new strategies to overcome global health challenges. Our research focuses on issues such as:

- Cardiovascular disease and obesity
- Emerging infectious diseases
- Global cancer
- Global environmental health
- Global mental health
- Health systems
- Maternal, adolescent and child health

86
faculty

214
active research grants

\$61 million in extramural funding for global health research